

# Lyla

- [Undead](#)
- [Lyla](#)

# Undead

---

---



Lyla

### Reference Sheet

Reference Sheet	
Audition	<a href="#">Lyla Audition</a>
Round 1	<a href="#">Lyla v. Azteron</a>
Round 2	
Round 3	
Tournament Status:	WIP

### Undead



#### Aliases/Nickname(s)

Undead\_Artisan

#### Pronouns/Gender/Sex

He/Him, Male

#### Vocation

Comic Writer/Artist

### Social Media

#### Discord:

undead\_artisan

#### Twitter:

@Undead\_Artisan

**DeviantART:**

[entry]

**Website:**

[entry]



# Lyla

---

---



"If we are to fall, one must awake to justice to fight for those who cannot."  
Let's be that one!

-- Lyla, affirming her sense of duty

Harbinger, Acolyte. Lyla is a humbled soul who finds herself in the Crossroads to hopefully become a hero of her own right without fear and judgement from others.

A kind woman in a white robe, adorned with patterns of stars and gems. She dons a tiara and jewelry that shines with gold and green stones. Under the robe is a gray undershirt and pants. Attached to her belt is a knapsack holding her tome. With yellow eyes, she observes any troubles that could be fixed with a bright view of the world as a Harbinger!

### Table of Contents

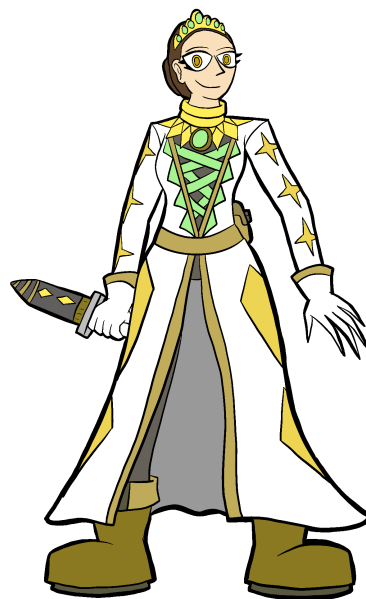
1. [Backstory](#)
2. [Personality](#)
3. [Abilities](#)
4. [Strengths](#)
5. [Weaknesses](#)
6. [Gallery](#)
7. [Author's Notes](#)

## Backstory

Lyla was born a normal girl in her town, growing up to work as an acolyte. She operates as a traveling humanitarian, both being educated on the heroism of the past and maintaining peace for those who require it. It's small work but she hopes to accept things as they are. However, she starts to present some magical strength unseen by others in a long time. While she tries to assure others it doesn't warrant fear, there are extra measures and observations done to keep her docile. Once this starts, Lyla starts to see a clone of herself materialized by the light, presenting some second opinions to the way things are and how much more they could potentially do. She tries to keep this side of her hidden in the act of duty, hoping to keep the expectations of being a paragon of peace.

## Personality

### Lyla



#### Aliases/Nickname(s)

Acolyte of Light  
Harbinger

### Profile Data

#### Race

Human

#### Pronouns/Gender/Sex

She/Her, Female, Bi

#### Age

23

#### Weight/Height/Build

110 lbs / 5'8" / Average

#### B/W/H Size

[entry]

#### Hair/Eye/Skin Colour

Brown / Yellow / White

#### Distinguishing Marks

n/a

### Abilities



# Abilities

---

## Light Manipulation

From her person, Lyla is able to emanate light. It radiates a bright luminosity akin to a strong lantern. She is able to compose this light into a focused point of release, able to stun the senses of a person. In an offensive use, the magical light is capable of visual distortion and knocking back things.

## Sheathed Dagger

Lyla wields a dagger that contains gemstones on the sheath. Inside it, there is only the hilt of the dagger connected to no blade. When being held by anyone else, the dagger is harmless. However, Lyla is able to channel her light through the sheath to forge a sharp, hard light dagger. It operates as a normal blade in efficiency, capable of extending the blade's length depending of how much light is channeled into it.

## Doppelganger

Lyla's essence of light is capable of composing itself a physical body, sharing the same height and physicality of Lyla herself. This doppelganger reacts with a more hostile behavior compared to Lyla's nature. It usually remains hidden from the general view, resting within Lyla's person as a form of protection.

When Lyla is being harmed and is able to see the danger, the doppelganger emerges from her to tank the damages. It acts autonomously within the direction of a perceived threat, having a maximum operating range of 15 feet away from Lyla. While they can mimic Lyla's previous skills, it can't match her control and creativity with the powers. They can speak, but it is only audible to Lyla herself.

# Strengths

---

## Book Smarts:

Well read and capable of thinking her ways through problems in a logical way. Willing to experiment more with her light's powers and utilities.

## Trusting / Compassionate:

Lyla is more than willing to be an aid to someone first before being their enemy. Her kindly behavior would allow her to gain some level of trust to others.

## High Defenses:

Thanks to the doppelganger shielding her and light energy causing disorienting effects, Lyla is able to dodge and avoid direct harm for most conflicts.

## Weaknesses

### Low Battle Experience:

Lyla is only given basic knowledge on self defense. While competent with using a dagger, she isn't likely to win a straightforward brawl with strength alone.

### Naivety:

Lyla can be easy to have believe certain ideals if it appeases to her principles. If the idea or action is shown to do 'good', she wouldn't mind following along.

### Headstrong Nature:

When she is set firm on a belief, it would be difficult to have Lyla to turn back and quit. This may lead to conflict and escalation if Lyla is told to stand down.

## Gallery

LYLA



Age: 13   Height: 5'8"   Pronouns: She/Her

Likes: Meditation, Charity, Community, Stories

Dislikes: Selfishness, Cruelty, Failure, Darkness

PERSONALITY

Lyla is a kind soul, wanting to view the good in all before anything else. She is greatly optimistic to her situation and the world around her.

When confronted with uncertainty, she is clouded with confusion and relies on her blind faith. However, it's easy for it to delve into fear.

BACKGROUND

Even in an ascetic, Lyla is a devotee to spreading goodwill and peace to the masses. As a young girl, she trained in martial prowess of light. While not dangerous, it has been won by martial arts as "No-kill". Her compassionate heart has been in her to Temple grounds, making Lyla believe her glowing powers are a gift from the gods.

While still hoping to be useful as an ascetic, her power is perceived as magic. Some might want to use her power to open seeing the light, but the Temple would want others to see a lightning of judgment. Lyla wishes to her father and as the light's true beam close to her heart.

"Gather the world through its darkness, by absorbing it as an open hand and heart"

In her eyes, it is a simple hope for a noble world.

ABILITIES

Light Control:

Lyla is able to conjure fragments of light from her hands. They can vary in intensity, ranging from a gentle glow to blinding light. Its offensive effects can cause visual distortion and brief knockback.

Her light can be utilized with range either to surround her person or be summoned at as far of a distance she can see and concentrate.

Dagger Sheath:


A dagger hidden with no blade underneath. Concealed under her coat and small in size. With the gems adorning onto it, Lyla can channel the light through it, making it surround the sheath. The light would concentrate itself into the shape of a blade, during its original properties.

Doppelganger:

A being composed of hard light that dwells within Lyla. It usually shows her appearance and can utilize both her light powers and dagger as a copy. However, it replaces refinement for strength.

The doppelganger only materializes as a defense for Lyla, acting as a shield for her. It has a range of 5 feet of immunity.

It speaks to Lyla, but only through the mental connection.



STRENGTHS:

- Booksmart
- Trusting
- High Willpower
- Agile
- Doppelganger Protection
- Persuasive On Resolution
- Peaceful

Weaknesses:

- Low Battle Experience
- Physically Weak
- Naivety
- Not Prone to Self-Imposed Violence
- Straightforward Thinking

Items of Legend:

Personal Keepsake. Holds many myths and stories from her religion. Contains blank pages.

Items of Legend:

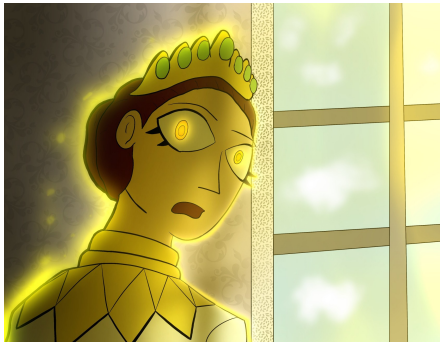
Personal Keepsake. Holds many myths and stories from her religion. Contains blank pages.

As the light shines, as the hours burn away, we grow ever stronger for our destined day.

-Items of Legend, New Edition

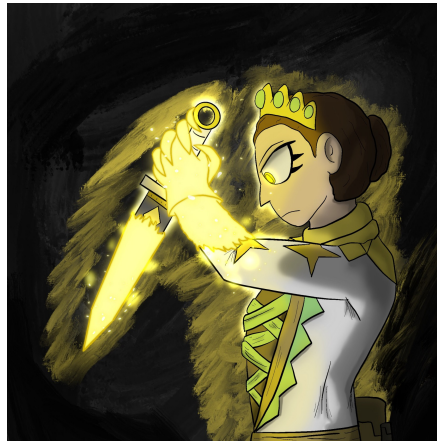


Reference Sheet (pg 1)

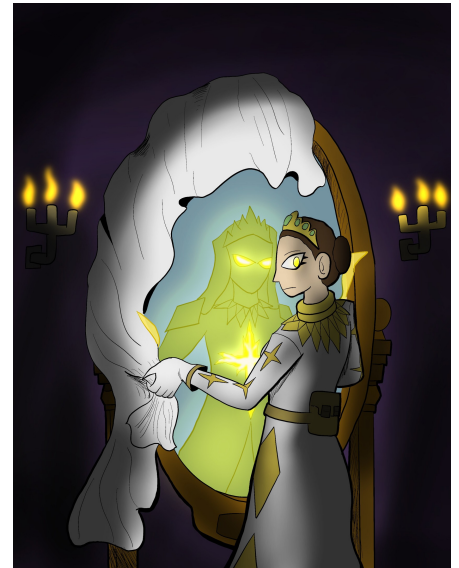


Light Emanation

Reference Sheet (pg 2)



Usage of the dagger



Doppelganger

## Author's Notes

---

- Lyla's eyes glow a sharp yellow in shade/darkness.
- The clone is visible to others. Normally only shown with brief glimpses of her arms or head. Full body shown if either Lyla wills it or she is in immediate danger.
- The Tome of Legends decreed stories and acts of kindness that Lyla follows. Specifically, being a lead and a selfless soul.
- Along with the default of increasing ethereal tails, Lyla would have a brighter passive glow to her person with each tag collected.
- While intended as a one off, Lyla was given alot more development than intended.