

# Other Major Locations

The other major locations in Crossroads.

- [Tiger's Fields](#)
- [Shifting Meadow](#)
- [Zo River](#)

# Tiger's Fields

Farmsteads that feed all of Crossroads work the land here. They frequently raise cows, horses, chickens, goats, sheep, pigs, and alpaca!

-- Unknown

Well... it's farmland! All of Crossroads' food is grown and raised here, then shipped all over. The locals are sweet, and despite their isolated location, even they keep up-to-date with the Tournaments!


## History

If you want to see some cows, sheep, chickens, and... whatever that animal is over there, Tiger's Fields is your place to visit. Chat with some salt-of-the-Earth locals, eat the best blueberry pie you've ever had, and buy a hand-knit sweater!

This far out into the country, it's easy to hide out. Looking for a new identity? Need to reinvent your life? This here's the place for you! Farmers are always looking to take on new stablehands and milkmaids.

Tiger's Fields

Livestock Haven



Main inhabitants

None

Soundscape

Farm animals' cries and a quiet breeze

Biome

Pasture

Aesthetic

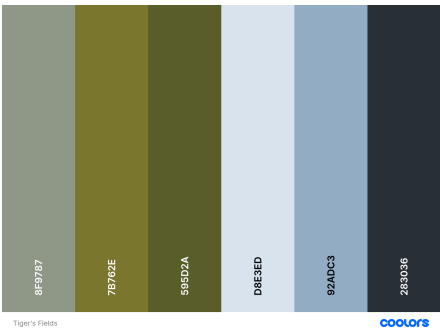
Rural, charming, rustic

Notable Features

The cute animals!

# Gallery

---



Tiger's Fields Palette

# Author's Notes

---

# Shifting Meadow

A strange meadow that either gifts or takes away time from those that travel through it. It may take someone a few minutes to traverse it, or an entire day. Frequently avoided by merchants.

-- Unknown

The strange meadow is a mystical and enigmatic place, existing in a state of complete ambiguity. As travelers pass through its grassy expanse, they become subject to its whims, which may either gift or take away time. It is a place where the passage of time is profoundly altered--almost as if the meadow has a mind of its own, toying with those that pass over it. If you're in a rush, avoid this place at all costs.


## History

Anyone who has lived in Crossroads for more than a few years knows that Shifting meadow is not a place you want to pass through while traveling. It may be a fun (at first) tourist attraction, but quickly transforms into a nuisance once you're stuck in it for hours at a time. It's said even the God Eater herself avoids this meadow, unable to tame its whims.

For the few who *do* dare to venture into the meadow, the experience is both captivating and unnerving. If you're lucky, the expanse passes in a blur beside you in just a few steps. But for the unlucky (and often, those on a time crunch), each step drags through space at a snail's pace and ends up with a search party waiting at the other end. For the *extremely* unlucky, the Meadow may choose to swallow you whole, trapping you in an eternity of unending wandering.

### Shifting Meadow

Distortions of Time



**Main inhabitants**  
None

**Soundscape**  
[Rustling grasses](#)

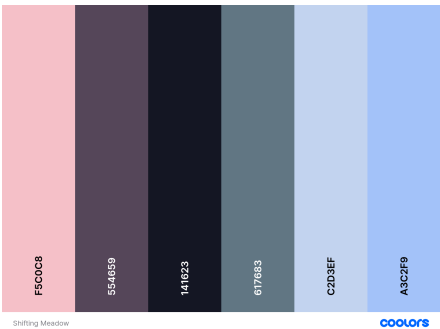
**Biome**  
Meadow

**Aesthetic**  
Haunting, transcendent.

**Notable Features**  
The fluidity of time

# Gallery

---



Shifting Meadow Palette

# Author's Notes

---

# Zo River

---

---

Be careful of this river; its currents can be rough, and it is difficult to rescue those that fall in.

-- *Unknown*


Don't be deceived, the waters in this river are faster and deeper than you'd expect. Placid water and gentle rapids overlie a fierce undercurrent that pulls those who fall deep into an underground cave system. Rescue attempts are typically too dangerous to attempt... swim at your own risk.

## History

Beautiful and dangerous, Zo River is a scenic location visited by few. Lush flora and a thriving ecological location belie a savage river current. The crystal clear water seems to show a shallow river-- yet is truly an endlessly deep trench. The underworld of Crossroads, a twisting and turning series of underwater caves, is not a place you want to be stuck in if you don't have gills.

Zo River

Rapids of Wisdom



<b>Main inhabitants</b>
None
<b>Soundscape</b>
<a href="#">Water rapids rushing through the canyon</a>
<b>Biome</b>
River, forest

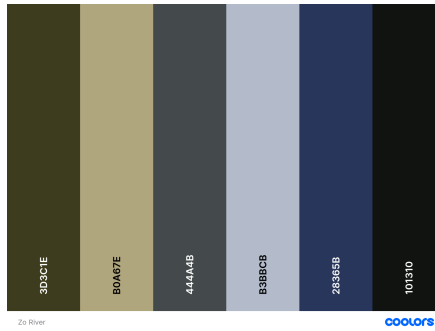
**Notable Features**

The labyrinthian cave system below the rapid water

# Gallery

---





Zo River Palette

# Author's Notes

---