

Shifting Meadow

A strange meadow that either gifts or takes away time from those that travel through it. It may take someone a few minutes to traverse it, or an entire day. Frequently avoided by merchants.

-- Unknown

The strange meadow is a mystical and enigmatic place, existing in a state of complete ambiguity. As travelers pass through its grassy expanse, they become subject to its whims, which may either gift or take away time. It is a place where the passage of time is profoundly altered--almost as if the meadow has a mind of its own, toying with those that pass over it. If you're in a rush, avoid this place at all costs.


History

Anyone who has lived in Crossroads for more than a few years knows that Shifting meadow is not a place you want to pass through while traveling. It may be a fun (at first) tourist attraction, but quickly transforms into a nuisance once you're stuck in it for hours at a time. It's said even the God Eater herself avoids this meadow, unable to tame its whims.

For the few who *do* dare to venture into the meadow, the experience is both captivating and unnerving. If you're lucky, the expanse passes in a blur beside you in just a few steps. But for the unlucky (and often, those on a time crunch), each step drags through space at a snail's pace and ends up with a search party waiting at the other end. For the *extremely* unlucky, the Meadow may choose to swallow you whole, trapping you in an eternity of unending wandering.

Shifting Meadow

Distortions of Time



Main inhabitants

None

Soundscape

Rustling grasses

Biome

Meadow

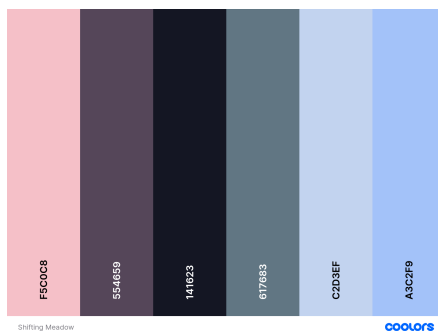
Aesthetic

Haunting, transcendent.

Notable Features

The fluidity of time

Gallery



Shifting Meadow Palette

Author's Notes

Revision #5

Created 3 November 2023 03:49:16 by God Eater

Updated 10 November 2023 02:03:06 by God Eater